



EOTECH
more for science



In-vivo
Ex-vivo
In-vitro

EvaSURF

The most resolving
3D Scanner
for **Surface measurement**

.....



Method

Scanner technology

EvaSURF is the most resolving Eotech 3D scanner, thanks to its very narrow field of view. It combines fringe projection and stereovision providing high accuracy measurements.

Positioning bench

The scanner is mounted on geared column clamped on a stable table, targeting the sample downwards.

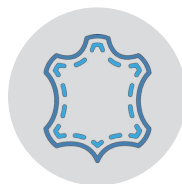
Dedicated software

The AEVA software is designed for clinical studies. It guides the user through a step by step acquisition procedure. The set of recorded 3D data of the study (all samples at all time points) is analyzed automatically according to preset claims and selected zone of interest. It offers a wide range of skin parameters. Results are given through illustrations and calculated values.

Applications



In-vivo: Nail microstructures



Ex-vivo: Skin microstructure, Microrelief



In-vitro: Pores, Microrelief, Fine lines

Fields of use:

- Bio-engineered skin
- Explants
- Nail
- Skin replica

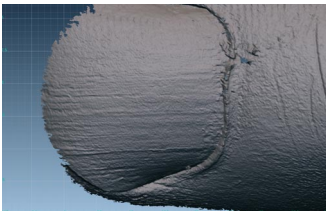
Advantages:

- High resolution system
- Fast measurement and high reproducibility
- Flexible system, offers surface and small part analysis
- Simple to use, minimum setting and skill required

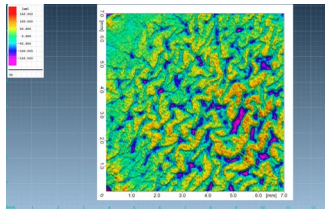
Technical Data

Analysis results

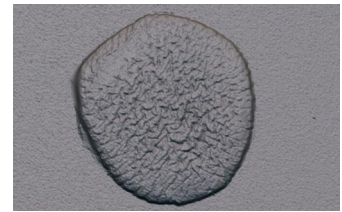
- Surface roughness statistics
- Object detection (number, volume, area, depth, circumference)
- Features density of pores and microrelief
- Profile roughness statistics
- Fine lines statistics (number, volume, area, depth, circumference)
- Skin feature density



Nail



Fingerprint microrelief



Explant

Related products

Positioning device



Measurement specifications

3D Scanner	EvaSURF
Field of view dimensions (mm)	25 X 20
Measuring depth (mm)	15
X, Y resolution (μm)	10
Z resolution limit (μm)	0,5
Z feature accuracy (μm)	± 5

Technical specifications

Acquisition time	1 second
Camera resolution	2 x 5Mpx
Projection unit	Miniaturized projection technique
Light source	50 W high-power LED white, Cyan filter
Sensor weight	4 kg
Dimensions	W 300 x D 210 x H 175 mm
Power supply	AC 110/230 Volt, 50-60 Hz, 150W
Connection	USB 3.0
Computer configuration	High performance according to latest standards
Operating system	Microsoft Windows 11